

TOURISM AND HOSPITALITY MANAGEMENT

FACTSHEET 2021-2022

Christian University of Thailand



FACTSHEET OUTLINE



POINTS FOR DISCUSSION

About the Program

Key Advantages

Qualifications & Documents

Curriculum Structure

Academic Team Lecturers

Study Plan & Classes

Facilities

Exchange Program & Internationalization

Career Path

Alumni

Contact Us

DEAR PRINCIPAL, PARENT AND STUDENTS

Greeting from Department of Tourism and Hospitality Management, Christian University of Thailand. We are writing this message to check whether you have any plan to go to the university in a field of tourism and hospitality management or not.

If yes, we are more than happy to assist you with all concerns about the program requirements and the application procedures.

Please find a time to contact us at your early convenience so we can discuss your plan and the expectation in this program. For better taking care, please book your appointment with us through this email : hti-ctu@christian.ac.th

OUR STORY



Department of Tourism and Hospitality Management (B.T.H.M.) established since 1997 and has been producing many qualified graduates working in several tourism and hospitality sectors both domestic and international companies. We pride ourselves on the topically of our teaching, caring and strive to make sure you will obtain the best return on your investment time, effort and money in terms of increased job opportunities and enhanced career prospects.



“

INSPIRING WORDS

Learn from industry experts and leaders!

Tourism and Hospitality Management
where your dream starts here

OUR PHILOSOPHY

STRENGTH-BASED

all courses are taught in English and several opportunities to participate in international cooperative education under the MOU with leading international universities as well as exchange programs.



KEY ADVANTAGES



located just 45
minutes heading
west from Bangkok



very high-quality
teaching of
theoretical and
practical classes



accredited by the
Office of Higher
Education
Commission in
Thailand



low living cost,
on campus
dormitory



well-equipped
learning centers
such as culinary,
hotel and tour

IN BRIEF

132 CREDITS

- FOUR-YEAR PROGRAM
- ENGLISH BASED TAUGHT
- SCHOLARSHIP PROVIDED
- EXCHANGE PROGRAM
- INTERNSHIP (THAILAND OR ABROAD)
- FULLY-EQUIPPED & LEARNING CENTER
- FLAT RATE TUITION FEE
- UNIFORMS AND NAME TAG PROVIDED
- THE BEST CARING & ADVISORY SYSTEM

QUALIFICATIONS



1

Must have graduated from Mattayom 6, Grade 12 or equivalent



2

Having High school certificate in specified of English group is not less than 2.00



3

English proficiency score test such as TOEFL/IELTS/TOEIC is acceptable (optional)



4

Having GAT (General Aptitude Test) for English group not less than 40% (optional)



5

Do not have a penalty record, psychological problem, suffering from any contagious diseases

REQUIRED DOCUMENTS



ENCLOSE THESE DOCUMENTS WITH THE APPLICATION FORM:

- A copy of transcripts / educational certificate (s)
- A copy of Thai ID card or passport for overseas applicants
- Three 1" photos taken within the last three months (Frontal view, without hats or sun glasses)
- A copy of Household Registration (for Thai)
- A copy of TOEFL/IELT/SAT result (if applicable)

STUDY PERIOD;

- Semester 1 June-October
- Semester 2 November-February

tuition fee

All the costs are estimated only. The actual costs depend on the actual course registration which is subject to change with notice and does not include Material ,Textbook, Transportation and Health Insurance.

only 8 semesters

no summer required

47,500 Thai Baht

per Semester

380,000 Thai Baht

in total

CURRICULUM STRUCTURE



GENERAL EDUCATION

- | | | |
|--------------------------------|----|---------|
| • Social Sciences & Humanities | 7 | Credits |
| • Sciences and Mathematics | 3 | Credits |
| • Languages | 18 | Credits |
| • Physical Education | 2 | Credits |

PROFESSIONAL COURSE

- | | | |
|------------------------|----|---------|
| • Tourism Core Courses | 24 | Credits |
| • Professional Courses | 60 | Credits |

COOPERATIVE EDUCATION	12	Credits
-----------------------	----	---------

FREE ELECTIVE	6	Credits
---------------	---	---------

Academic Team Lecturers



SONGKRAN K.

Director

Le Master Economie et Management
à finalité Professionnelle Mention
MANAGEMENT DU TOURISME
Université de Perpignan Via Domitia, France



PUNJAPORN T.

Lecturer

M.A. (Management of Recreation Tourism)
Chulalongkorn University



CHANISTHA J.

Lecturer

M.A. (Tourism Development)
Mae Jo University



CHOTIMA D.

Lecturer

M.M. (Integrated Tourism and Hospitality
Management)-Candidate
National Institute of Development
Administration (NIDA)

Study Plan

From First Year until Graduation



YEAR-1

General Ed.

- Languages
- Mathematics
- Physical Education



YEAR-2

Foundation

- Intro. Tourism & Hospitality
- Human Resources
- Laws and Ethics
- Finance & Marketing
- Information Technology
- Etc.



YEAR-3

Professional

- Tour Operations
- Airline & Transportation
- Arts and History
- Tourist Guide
- Culinary / Food & Beverage
- Destination design
- Lodging / Front Operations
- Seminar and Research
- Etc.



YEAR-4

Internship

- Internship 1
- Internship 2

Thailand / Abroad (8 months)

TOEIC Exam
ICT Exam
Comprehensive Exam



OUR CLASSES

A brief atmosphere of a our classes

Tourist Guide



Mixology



Food Service



Lodging Operation



Culinary



Airline Ticketing



Educational Field Trips



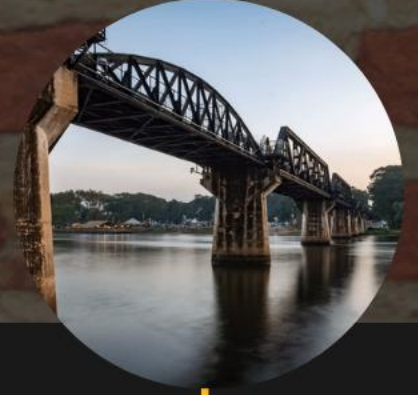
Ayutthaya



Buriram



Chiang Mai



Bangkok

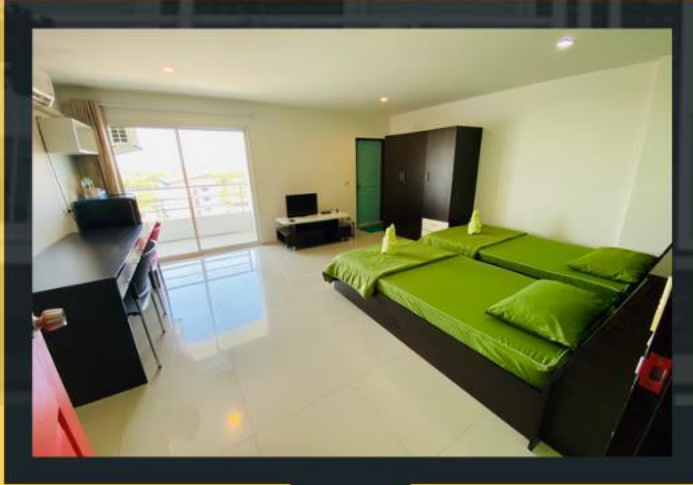
Phuket

Sukhothai

Kanchanaburi



Our Facilities



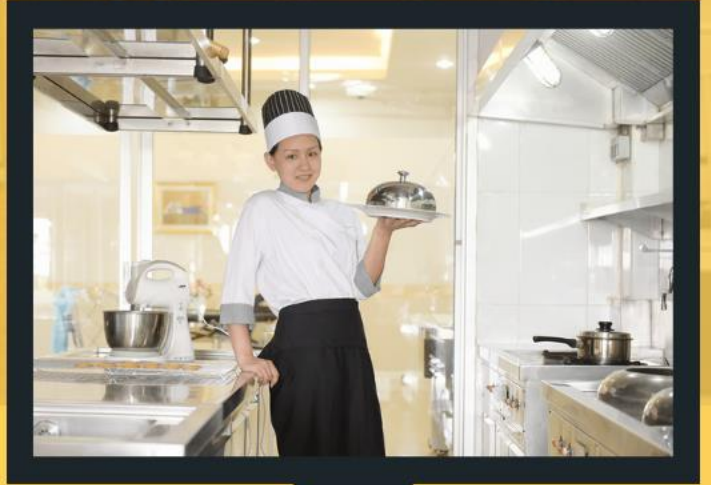
DORMITORY

smooth and effective quality
services



HOTEL LEARNING CENTER

hands-on learning opportunities
and real-work experiences in
accommodation industry



CULINARY LEARNING CENTER

Full equipped of culinary
operations to enhance
student's ability in cooking and
baking skills



EXCHANGE PROGRAM



Chirapan D.
ASP PROGRAM 2016
Guangdong U., China



Chanin F.
ASP PROGRAM 2014
U. Malaysia Perlis, Malaysia



Hermharn J.
ASP PROGRAM 2017
Dongseo U., South Korea



Rawinporn K.
UNIVERSITY COLLABORATION
Tourism College Semmering,
Austria



Chotima D.
ASP PROGRAM 2015
Josai Inter. U., Japan



Nonglak Y.
UNIVERSITY COLLABORATION
Ishou U., Taiwan

and more.....

Internationalization

Summer



CAMBODIAN

Batch 20

Yuna



BHUTANESE

Batch 20

Kang



KOREAN

Batch 21

Ye



CAMBODIAN

Batch 21

Ricky



TAIWANESE

Batch 18

Sonam



BHUTANESE

Batch 16

Internationalization

Clement



PHILIPPINO

Batch 19

Joe



TAIWANESE

Batch 16

Jay



TAWANESE

Batch 16

Sunny



BHUTANESE

Batch 16

Yukako



JAPANESE

Batch 21

Zara



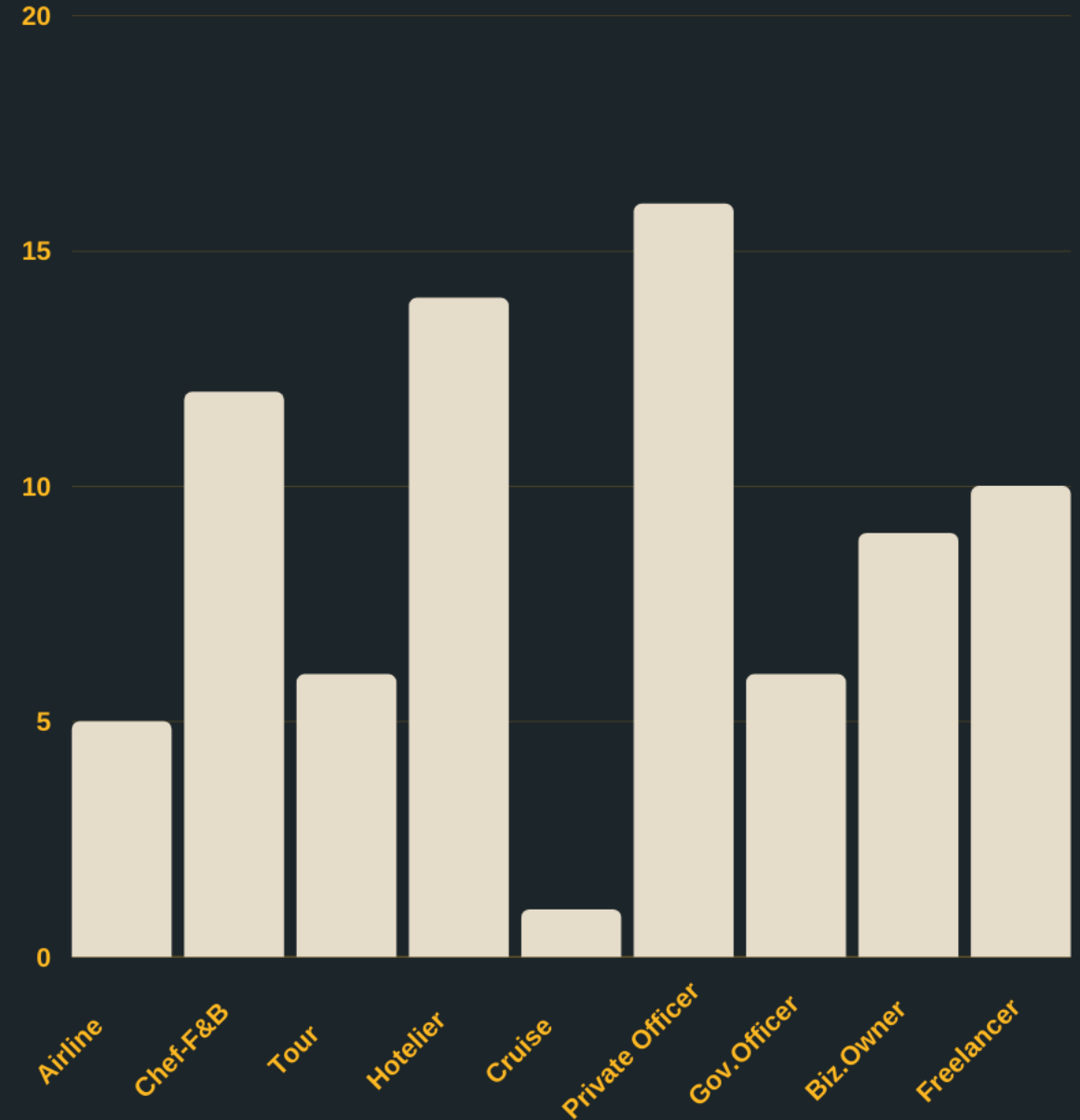
CHINESE

Batch 17

and more.....

OVERALL PERFORMANCE

CAREER PATH AFTER GRADUATED



OUR PARTNERS



Chang Jung Christian University, TAIWAN R.O.C.



SIAS International University, China



I-Shou University, TAIWAN R.O.C.



KOBE College, Japan



Tourismusschulen Semmering, AUSTRIA



Tourismusschulen HLF KREMS, AUSTRIA



NTC Group, Cambodia



The Chiang Mai Hotels Group, Thailand



Small And Medium Enterprises, Ratchaburi

our alumni



BACHELOR OF ARTS PROGRAM IN TOURISM AND HOSPITALITY MANAGEMENT



METHAWIN D.

Front Office Manager
B.T.H.M.-2



HIRANYA K.

Teacher
B.T.H.M.-5



WANNASIRI P.

Front Office Manager
B.T.H.M.-5



RATTANA K.

Living Abroad, AUS.
B.T.H.M.-8



ARRADA P.

Living Abroad, USA.
B.T.H.M.-13

our alumni



BACHELOR OF ARTS PROGRAM IN TOURISM AND HOSPITALITY MANAGEMENT



SOMPOL K.

Crew Purser
B.T.H.M.-10



PASSAKORN B.

Restaurant Owner
B.T.H.M.-10



WEERA B.

Chef
B.T.H.M.-10



CHANIN F.

Barista
B.T.H.M.-15



KWANRUETHAI P.

Living Abroad, AUS.
B.T.H.M.-7

and more.....

**LEARN FROM
INDUSTRY EXPERTS
AND LEADERS!**



How to apply

1

Online application

<https://estudent.christian.ac.th/admission/>

2

Upload documents

3

Candidate Announcement

4

Interview

5

Official Announcement

6

Orientation

7

Welcome

REACH OUT



Instagram

@Tourism_cut



FACEBOOK PAGE

Tourism Hospitality Management Program CUT



TWITTER

@TourismCut

REACH OUT



MAILING ADDRESS
144 Moo.7, Prapathone-Banpeaw
Road., Donyaihom, Muang,
Nakhon Pathom, Thailand 73000



EMAIL ADDRESS
hti-ctu@christian.ac.th



PHONE NUMBER
+66 34 388 555 ext.2226



“**Tourism and Hospitality Management**
where your dream starts here”

